



# “Plancius”

The new vessel of Oceanwide Expeditions

M/v “Plancius” was built in 1976 as an oceanographic research vessel for the Royal Dutch Navy and was named “Hr. Ms. Tydeman”. The ship sailed for the Dutch Navy until June 2004 and was finally purchased by Oceanwide Expeditions. Still under construction, but available for Polar expeditions in January 2010, the vessel shall be completely rebuilt as a 110-passenger vessel and shall comply with the latest SOLAS-regulations (Safety Of Life At Sea).

M/v “Plancius” is classed by Lloyd’s Register in London and will fly the Dutch flag.



# Ship details



M/v "Plancius" can accommodate 110 passengers in 53 passenger cabins with private toilet and shower in 4 triple cabins, 39 twin cabins (ca. 15 square meters) and 10 twin superior cabins (ca. 21 square meters).

All cabins offer lower berths (either two single beds or one queen-size bed), except for the 4 triple cabins (bunk beds and 1 lower bed).

The vessel offers a restaurant/lecture room on deck 3 and a spacious observation lounge (with bar) on deck 5 with large windows, offering full panorama view. M/v "Plancius" has large open deck spaces (with full walk-around possibilities on deck 3), giving excellent opportunities to enjoy the scenery and wildlife. She is furthermore equipped with 10 Mark V zodiacs, including 40 HP 4-stroke outboard engines and 2 gangways on starboard side, guaranteeing a swift zodiac operation.

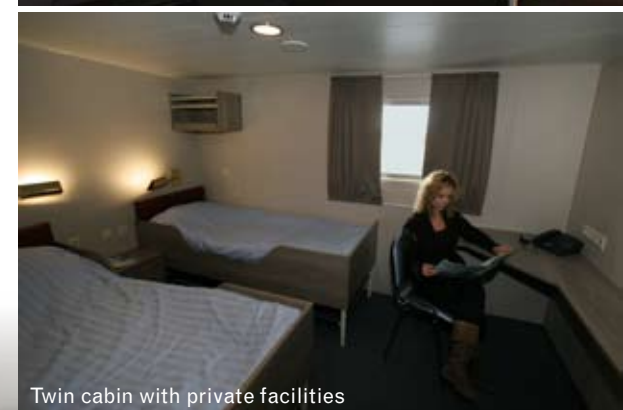
M/v "Plancius" will be comfortable and nicely decorated, but is not a luxurious vessel. Our voyages in the Arctic and Antarctic regions are and will still be primarily defined by an exploratory educational travel programme, spending as much time ashore as possible. This vessel will fully meet our demands to achieve this.

The vessel is equipped with a diesel-electric propulsion system which reduces the noise and vibration of the engines considerably. The 3 diesel engines generate 1.230 horse-power each, giving the vessel a speed of 10 - 12 knots. The vessel is ice-strengthened and was specially built for oceanographic voyages.

M/v "Plancius" is manned by 17 nautical crew, 19 hotel staff (6 chefs, 1 hotel manager, 1 steward-barman and 11 stewards / cabin cleaners), 8 expedition staff (1 expedition leader and 7 guides-lecturers) and 1 doctor.



Superior cabin with private facilities

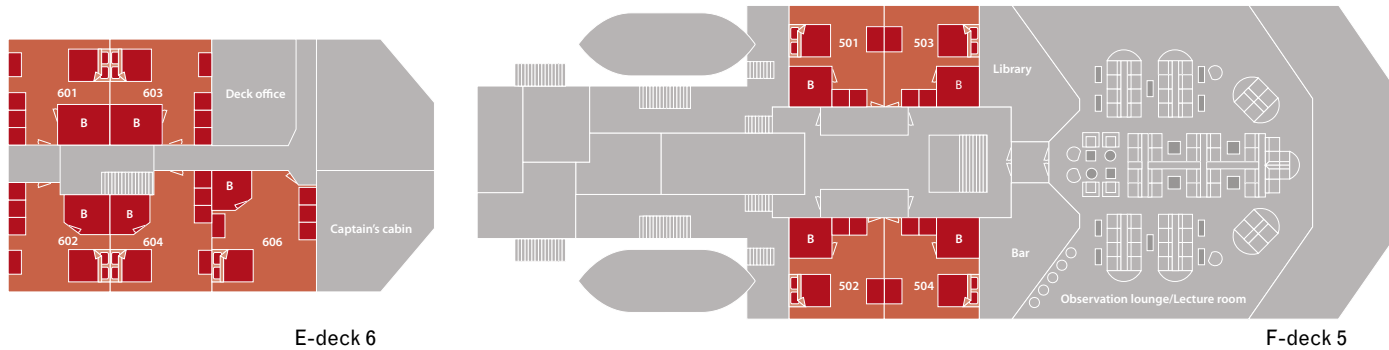


Twin cabin with private facilities



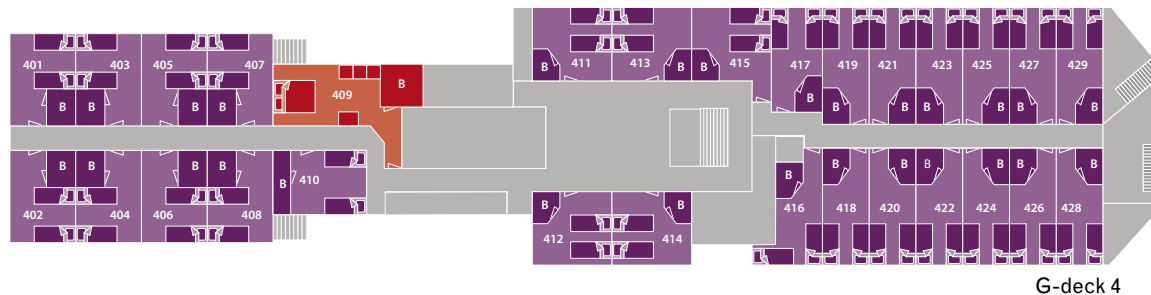
Observation Lounge / Lecture room

# Deckplan

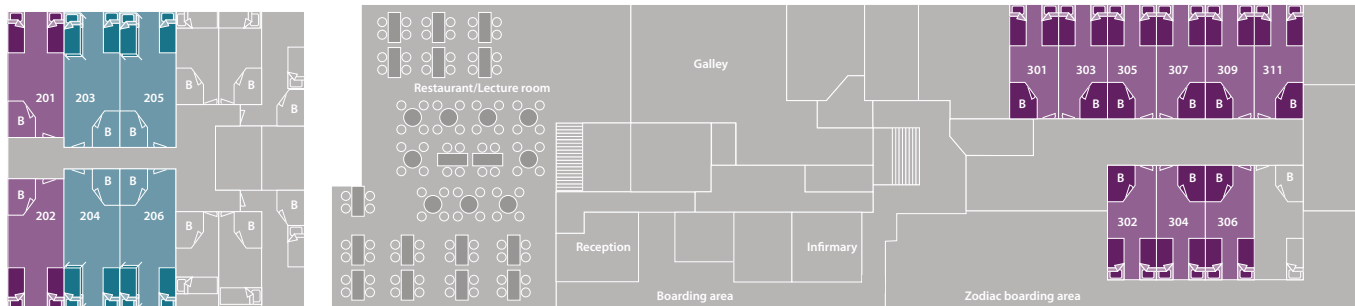


E-deck 6

F-deck 5



G-deck 4



J-deck 2

H-deck 3

## Legenda

- superior
- twin with private facilities
- triple with private facilities

- lower berth
- upper and lower berth

- double bed

- B Bathroom



Length: 89 metres (267 feet)  
 Breadth: 14,5 metres (43 feet)  
 Draft: 4,5 metres (15 feet)  
 Passengers cap: 110  
 Ice class: 1D

# Available expedition gear

## Expedition rubber boots

No more worries having to fit bulky boots into suitcases! Onboard m/v "Plancius" we will provide for all passengers for free, the use of rubber boots. The pre-ordered boots will be handed out to passengers on loan for the duration of the expedition and will be returned to the expedition team on the day of disembarkation. These boots are of high quality tuned for the outdoors, perfect for the Antarctic and Arctic conditions which we will encounter. Sturdy rubber will keep your feet dry, the 2 mm Neoprene lining will keep your feet warm for all landings. Boots are ultra light and comfortable to wear. The outsole gives extremely good grip / traction on slippery surfaces. It has also a cushioning effect in the heel area. The boots are also very suitable for longer hikes and can be used in combination with snowshoes, which are also available for free use onboard.



Sizes - Boots													
European	36	37	38	39	40	41	42	43	44	45	46	47	48
UK - men	4	4.5	5.5	6.5	7	7.5	8	8.5	10	11	12	13	13.5
UK - women	3.5	4	5	6	6.5	7	7.5	8	9.5	10.5	11	12	13
USA - men	4.5	5	6	7	7.5	8	8.5	9	10.5	11.5	12.5	13	14
USA - women	6	6.5	7.5	8.5	9	9.5	10	10.5	12	13	14	15	15.5

## Expedition jacket for men & woman

Wearing the right gear on an expedition is important! Expedition jackets can be pre-ordered and purchased for a discounted price. Pre ordered jackets will be given to passengers once onboard m/v "Plancius". The North Face® jacket is a functional two-in-one jacket with a wind- and waterproof, breathable exterior jacket and a quilted, insulated interior jacket that zips out. Both jackets keep warm and dry during the zodiac cruises and activities ashore. The jackets are embroidered with the Oceanwide Expeditions logo.

**Color** asphalt grey / black (men) and black (woman)  
**Weight:** 1090 g  
**Fabric** Body: HyVent™ 2L / Insulation: Heatseeker Triclimate™  
**Details:** Waterproof, breathable, seam-sealed • Fully adjustable, removable drop hood with lower face protection • Chest pocket • Pit-zips with two-way zippers • Internal chest pocket • Two hand pockets • Elastic and Velcro® adjustable cuffs  
**Pre-order price** EURO 160,- per jacket  
 US Dollar 220,- per jacket



Men



Women

Sizes - Jackets					
Men	S	M	L	XL	XXL
Women	XS	S	M	L	XL

## Ordering

You can download the boots and jackets pre-order form on the agent section on our website or contact our reservation department.



**OCEANWIDE  
EXPEDITIONS**

For reservations please contact your travel agent or:

Oceanwide Expeditions, Headoffice  
 Bellamypark 9  
 4381 CG Vlissingen  
 The Netherlands

**T** +31 (0)118 410 410  
**F** +31 (0)118 410 417  
**E** [info@oceanwide-expeditions.com](mailto:info@oceanwide-expeditions.com)  
**W** [www.oceanwide-expeditions.com](http://www.oceanwide-expeditions.com)

Oceanwide Expeditions, USA & Canada Reservations  
 15710 JFK Blvd, Suite 285  
 Houston, TX 77032 - USA

**T** + 1 800 453 7245 or +1 281 987 9600  
**F** + 1 281 987 1140  
**E** [usa@oceanwide-expeditions.com](mailto:usa@oceanwide-expeditions.com)  
**W** [www.oceanwide-expeditions.com](http://www.oceanwide-expeditions.com)

Photographs: Monica Salmang  
 Design: Marloes Tiggeloven